

GAMMA STORE
COLLEZIONE IV

l'azienda



la produzione

Gamma&Bross è una storia di idee, linee, forme e funzioni. Progetti che hanno modificato lo spazio del salone, rivoluzionando le forme degli oggetti, tracciando le strade del beauty design nel mondo.

Questo continuo processo di innovazione e ricerca iniziata nei primi anni 80 ha fatto di Gamma&Bross una design company di riferimento nel panorama internazionale.

Lo stile "Gamma" riconoscibile per misura, pulizia, gusto e funzionalità nasce da una profonda intesa fra l'anima manageriale dell'azienda, la creatività dei migliori designer internazionali e una struttura produttiva all'avanguardia per efficienza e know how tecnologico.

Gamma è presente in 50 paesi con una rete di distribuzione che garantisce una gestione del cliente locale alla stessa altezza del livello qualitativo del prodotto e l'importanza del marchio.



Gamma&Bross è cresciuta nel tempo grazie alla scelta di mantenere la produzione all'interno dei propri stabilimenti Italiani, garantendo così massimi livelli qualitativi. Competenze antiche e moderne tecnologie permettono di realizzare prodotti di qualità elevata insieme ad una flessibilità richiesta dal mercato.

I punti di forza del complesso produttivo sono:

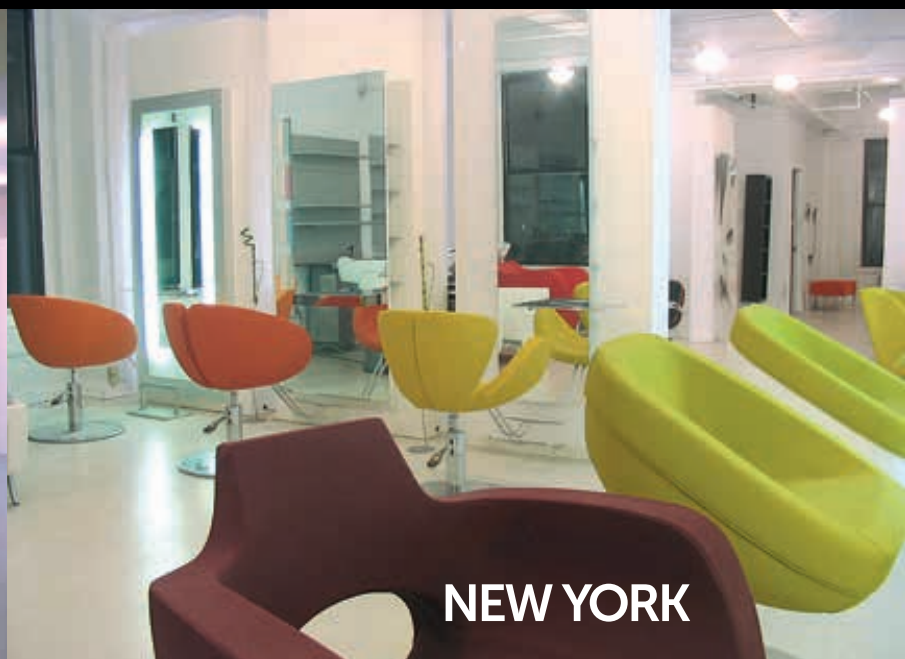
- 1) **L'atelier di falegnameria e laccatura**, reparto in grado di realizzare mobili su misura o in piccola serie.
- 2) **L'atelier di carpenteria metallica**, che permette di garantire il controllo della qualità delle parti meccaniche.
- 3) **L'atelier Poltrone, lavaggi e imbottiti**, una reparto estremamente flessibile e industrialmente efficiente.
- 4) **Un sofisticato sistema informatico**, abbinato a modernissimi utensili a controllo numerico, permette efficienza industriale, qualità artigianale e di nuovo flessibilità.



il nuovo SHOWROOM



PARIGI



NEW YORK



COLONIA

il brand

Il marchio Gamma&Bross si è affermato nei mercati mondiali grazie ad una strategia determinata e coerente anche nell'approccio commerciale innovativo.

Il cardine di questa strategia è un modello distributivo che prevede la presenza di Gamma&Bross nei paesi più importanti attraverso showroom monomarca e diretti.



If it is in fact true, that the cultural value of design is to make it available to everyone, then GAMMASTORE is the ultimate expression. Through industrial production, that was available to the few affluent, today is reality for everyone. With GAMMASTORE it is possible to have products at extraordinary costs that integrate beauty and function, modern forms, timeless, with materials that accent the essential clean lines.

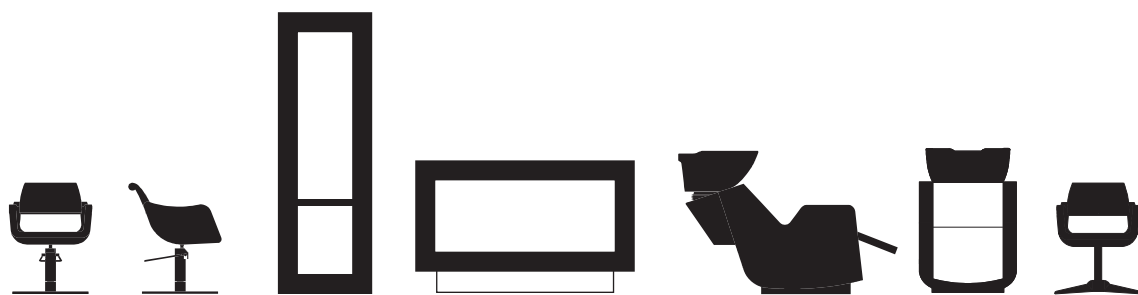
Design is the added value that makes the difference and it is obvious. A pulsating live design that comes out of the museum and into everyday life, that is valued for what it is and not what it costs. Accessible luxury has arrived: it's called GAMMASTORE.

S'il est vrai, comme il semble, que la valeur culturelle du design est de rendre accessible à beaucoup, à travers la production à échelle industrielle, ce qui était avant seulement à la portée de peu de personnes, les riches et les privilégiés, GAMMASTORE en est la preuve la plus éclatante. Avec la ligne GAMMASTORE aujourd'hui il est possible d'avoir à des prix incroyablement contenus, des objets qui conjuguent le fonctionnel au beau, des formes modernes et intemporelles avec des matériaux que en exultent les lignes vierges et essentielles. Le design est la valeur ajoutée réelle qui fait la différence et cela se voit. Un design vivant, palpitant qui sort des musées pour entrer dans la vie de tous les jours et qui a une valeur pour ce qu'il est réellement et non pour ce qu'il coûte. Le luxe accessible aujourd'hui a un nom: GAMMASTORE.

Die kulturelle Wertigkeit des Designs ist in dieser Zeit allgemein gut und alle Menschen zugänglich: durch die Maßstäbe der industriellen Fertigkeit ist dies möglich, nicht wie früher wo Design nur wenigen wohlhabenden und erleuchteten zugänglich war GAMMASTORE verkörpert dies Perfekt. Objekte die in optimaler Weise die Funktion mit dem Schönen verbinden, zeitlose Formsprache mit Materialien verarbeitet, die durch Geradlinigkeit und Purismus bestechen. Design mit klaren Linien macht den Wert aus; unterscheidet sich – und man sieht es! Lebendiges Design das aus den Museen entspringt und in unser heutiges Alltagsleben Eingang findet, wertvoll ist und doch wenig kostet! Luxus in diesem Sinne der für jeden erschwinglich ist und GAMMASTORE heißt!

Se é vero,
come é vero, che
il valore culturale del
design é di rendere accessibile
a molti, attraverso la produzione
su scala industriale, ciò che prima
era solo alla portata di pochi, ricchi e
illuminati, GAMMASTORE ne é la massima
espressione. Con GAMMASTORE, oggi, é
possibile avere, a costi straordinariamente
contenuti, oggetti che coniugano il
funzionale con il bello, forme moderne e
senza tempo con materiali che ne esaltano
le linee pulite ed essenziali. Il design é il
vero valore aggiunto che fa la differenza,
e si vede. Un design vivo, pulsante,
che esce dai musei per entrare nella
vita di tutti i giorni, che vale per
ciò che é e non per quanto
costa. Il lusso accessibile
oggi c'è: si chiama

GAMMASTORE





GAMMASTORE

xpression

Bianco, nero e materiali naturali rivestono forme pure dando origine ad un ambiente di vita **fluida e incontaminata**, non invadente né rumoroso: **un salone flessibile ed in continuo adattamento**, che offre la massima libertà nel creare la combinazione ideale.

Gli elementi si perfezionano con nuove proposte dove **tecnologie invisibili sono al servizio del massimo benessere** e della possibilità espressiva, senza dimenticare le emozioni.



White, black and natural materials wrap pure shapes creating a **fluid and uncontaminated space**, without intrusion and noise, living space: a **flexible and developing salon** that offers a great freedom to create the ideal combination among elements. The products improve with new proposals where **invisible technologies allow the highest wellness** and expressive opportunity, without forgetting emotions.

Le blanc, le noir et les couleurs naturelles revêtent des formes pures en faisant naître une atmosphère de vie **fluide et intacte**, sans envahir et sans faire de bruit: **un salon flexible et qui s'adapte sans cesse**, qui offre une grande liberté en créant la combinaison idéale. Les éléments se perfectionnent avec de nouvelles propositions où des technologies invisibles offrent le maximum du bien-être et une opportunité expressive, sans pour autant oublier les émotions.

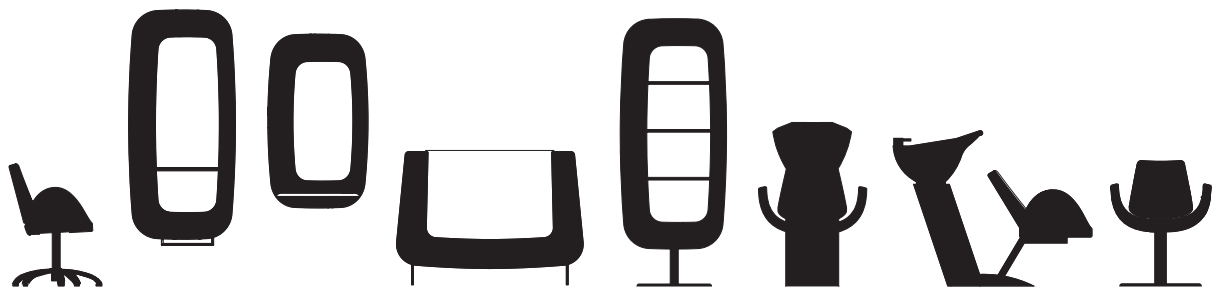
Weiß, Schwarz und Naturelle Stoffe bekleiden reine Gestalte und sie schaffen ein **flüssiges unbeflecktes Ambiente: ein flexibler Salon, der andauernd angemessen ist und bietet die höchste Freiheit**, die edel Kombination zu erfinden.

Die Einzelheiten verbessern sich mit neuen unsichtbaren Technologien, die nach höchsten Wohlfühlen und Ausdrucksfähigkeit streben ohne die Gefühle zu vergessen.

GAMMASTORE

xpression







GAMMASTORE

mood line

Un'ulteriore interpretazione del design moderno che cerca di sottrarsi alla noiosa rigidità delle forme lineari trasformandole in oggetti **morbidi** e **tondeggianti** grazie anche all'impiego di tecnologie produttive e **materiali di nuova generazione**. E' funzionale allo stile di chi privilegia il senso marcato dell'identità e della creatività, senza trascurare l'aspetto economico.



The latest interpretation of modern design that breaks free from the boring rigidity of linear forms transforming them into **soft, rounded** objects thanks to the latest manufacturing technologies and **innovative materials**. It is essential to the style of those who appreciate the strong sense of identity and creativity without going over budget.

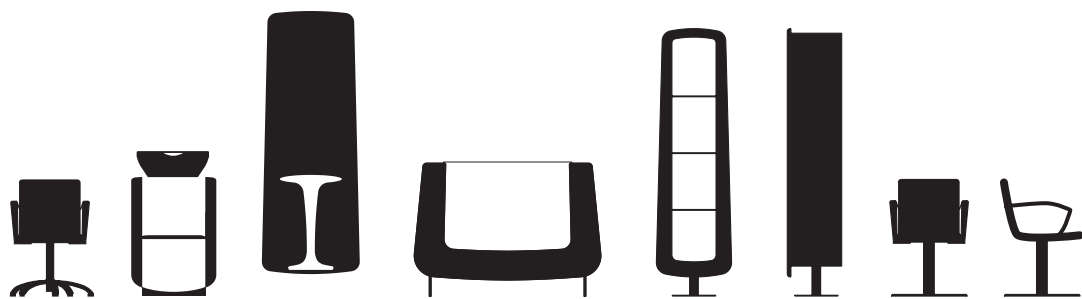
La nouvelle interprétation du design vise à casser la monotonie des figures linéaires pour les transformer en formes **souples et rondes**. Grâce à des **matériaux innovants** et des techniques de production révolutionnaires, tout cela devient possible. De ce fait, la ligne Mood répond aux attentes de tous ceux qui apprécient une forte identité et créativité sans toutefois dépasser les limites imposées par leur budget.

Die neueste Auslegung modernen Designs, die sich von der langweiligen **Starrheit linearer Formen losreißt**, und sie dank neuester Herstellungstechnologien und **innovativer Materialien** durch weiche und runde Formen ersetzt. Unentbehrlich für all jene, die ihrem Sinn für Identität und Kreativität folgen wollen, ohne das Budget aus dem Auge zu verlieren.

GAMMASTORE

mood line







quick silver

GAMMASTORE

E' il nuovo entry level che ripropone il design delle linee più prestigiose a costi dimezzati, senza rinunciare ai dettagli. Argento vivo per il **salone commerciale che vuole vestire trendy**. Tutto il meglio del design, selezionato, mixato e riproposto in esclusiva a chi desidera che il valore aggiunto sia fatto di idee.



It's the new product in town that offers high-end design at half the cost without leaving out detail. Silver surfaces for the **salon that likes to dress trendy**. All the best of design selected, recombined and reintroduced exclusively for the customer who likes to make a statement.

La nouvelle ligne abordable qui fait renaître le design des lignes les plus prestigieuses à un coût bien inférieur, sans devoir pour cela renoncer aux détails. Un éclat de lumière pour **un salon qui veut faire tendance**. Le meilleur du design, sélectionné, conjugué et présenté en exclusivité à ceux qui désirent que la valeur ajoutée soit avant tout faite d'idées.

Das Quick Silver Linie bietet anspruchsvoller Design zu erschwinglichen Preis an, ohne auf Details zu verzichten.

Quick Silver **die silberne Farbe spiegelt so den aktuellen Trend**.

Die anfallsreichen Ideen stecken im Design der Möbel und bitten somit einen zusätzlichen Mehrwert.

quick silver

GAMMASTORE







o chic

GAMMASTORE

eco chic

Introduce nel mondo dello sviluppo sostenibile, lo stile di vita che **privilegia il consumo e l'uso di materiali riciclabili**; la consapevolezza che sono stati costruiti da operatori adulti e adeguatamente remunerati in ambienti eco-compatibili, utilizzando tecnologie e **processi produttivi attenti all'ambiente**. Etica ed estetica finalmente insieme, dove forme e materiali convergono per dare senso e coscienza a valori sentiti e profondi.

Welcome to the world of sustainable development, with a life style that **privileges consumism and the use of recyclable materials**; where products are made in an eco - compatible environment, with technology and **manufacturing processes that use adult qualified and approved labor**. Ethics and esthetics finally come together where form and material converge to give a deep sense and awareness to profound values.

Introduit dans un monde de développement écologique, un style de vie qui **privilégie la consommation et l'utilisation de matériaux recyclables** et la conscience qu'ils ont été conçus par un personnel adulte et qualifié dans un environnement écologiquement compatible en utilisant des technologies et des **processus de production en harmonie avec la nature**.

L'éthique rencontre finalement l'esthétique, les formes et les matériaux convergent pour donner un sens et une conscience à des valeurs sincères et profondes.

Die neue Ecochic Linie berücksichtigt besonders umweltfreundlichen Aspekte. Daher wurde bei der Auslegung der Linie darauf geachtet, umweltlicher und **recyclebar Materialien zu verwenden**. Des Weiteren sind wir bestrebt nur mit Zulieferer zusammenzuarbeiten, die kein minderjähriges Personal beschäftigt. Bei der Gestaltung der Ecochic Linie wurden somit ästhetische und ethische Gesichtspunkte beachtet. **Das Bewusstsein mit Formen und Materialien spiegelt sich in der Unternehmensphilosophie wieder.**

GAMMASTORE

eco chic







light performance GAMMASTORE

Mobili come corpi illuminanti che animano il salone e lo proiettano all'esterno, in strada.

La luce diventa elemento dominante, performante e crea lo spazio, espandendolo. È il concept dedicato a chi desidera uno stile che anticipa i tempi, e che durerà nel tempo, perché spazio e tempo si fondono all'infinito.



Illuminated volumes animate the salon during the day and project an image on the street at night.

The light becomes a dominant element creating space with its weightless effect.

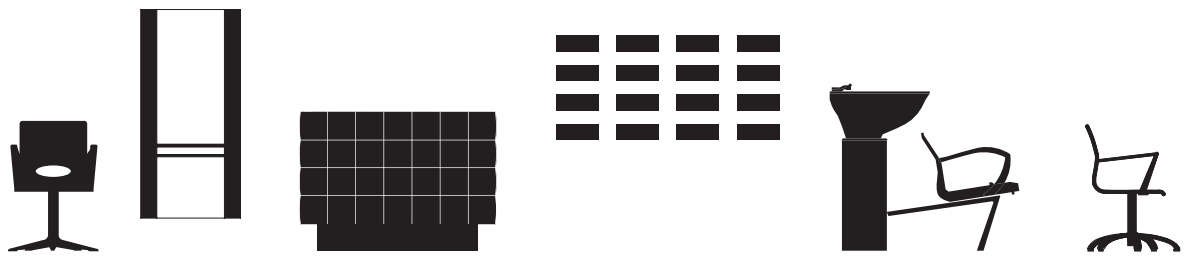
It is a concept dedicated to those who desire a style that is before its time, and that lasts. "Light performance" because time and space converge at the infinite.

Des meubles comme des corps illuminés qui animent le salon et le projettent à l'extérieur, dans la rue. **La lumière devient un élément prédominant, performant et crée l'espace en le répandant.** C'est le concept dédié à ceux qui désirent un style qui précède le temps et qui dure dans le temps parce que l'espace et le temps fusionnent à l'infini.

Beleuchtete Möbelkorpuse die den Salon beleben und sich nach Außen bis auf die Strasse projizieren. **Licht als wesentliches Element das sich darstellt, Raum schafft und vergrößert,** dieses Konzept ist all jenen gewidmet die einen zeitgeistigen Stil wünschen, der die Zeit überdauert. Den das Bedürfnis nach Zeit und Raum besteht immer.

GAMMASTORE light
performance







GAMMASTORE

formal chic

É il salone di tendenza, ma formale ed elegante.
Coglie gli **stimoli più innovativi ed interessanti** e li fonde
in una **classicità senza tempo**, stemperando gli eccessi e
strizzando l'occhio al passato.



It's the trendy salon yet formal and elegant, **picks the most innovative** and interesting fashion elements creating a **timeless classic**, taming the excess while winking an eye at the past.

C'est le salon tendance, mais formel et élégant.

Il capte **les stimuli plus innovateurs** et intéressants et les fusionne en un caractère **classique intemporel**, en atténuant les excès et en faisant un clin d'œil au passé.

Dies ist das Prinzip eines trendigen Salons, aber stilvoll und elegant. Überrascht mit **innovativen und interessanten Ideen, die im Grunde klassisch und zeitlos sind**. Alle Übertreibungen werden aufgelöst und trotzdem mit einem Auge mit der Vergangenheit flirtet.

GAMMASTORE

formal chic








GAMMASTORE

westernzen

Il fascino e le sensazioni dell'oriente, delle sue tradizioni, dei suoi maestri zen, rivisitato per il nostro occidente. **Forme essenziali, pulite, senza tempo**, che rendono attuale una filosofia antica e lontana. É il concept di chi ama lo stile etnico, senza eccessi e senza caricature.



The attraction and sensations of the orient, from traditions to Zen masters, revisited for our west. **Essential forms, clean, timeless**, that bring to life an ancient and distant philosophy. A concept for those who love the ethnic style, void of excess and frivolity.

La séduction et les sensations de l'Orient, de ses traditions, de ses maîtres zen, revisités par notre Occident. **Des formes essentielles, vierges, intemporelles** qui rendent actuelle une philosophie antique et lointaine. C'est le concept de ceux qui aiment le style ethnique, sans excès et sans caricatures.

Die Faszination des Ostens, die Philosophie der Zen-Meister und die alten Traditionen, für uns im Westen zunehmend entdeckt. **Essentielle Formersprache, sauber und zeitlos die sich im jetzt** und heute wiederfindet, wurzelnd in einer Alten; fernen Philosophie... ein Ethno-Stil den man liebt, weil er nichts überzeichnet oder übertreibt.

GAMMASTORE
westernzen



GAMMASTORE



36 Lavaggi/ **54** Posti lavoro/
78 Poltrone/ **98** Divani/
108 Receptions/
120 Complementi/
132 Colori/ **138** Disegni

36 Wash units/ 54 Styling units/ 78 Chairs/ 98 Sofa/ 108 Receptions/ 120 Furnishing/ 132 Colors/ 138 Drawings

36 Bacs de lavage/ 54 Coiffeuses/ 78 Fauteuils/ 98 Chauffeuses/ 108 Accueil/ 120 Ameublement/ 132 Couleurs/ 138 Dessins

36 Waschanlagen/ 54 Frisierplätze/ 78 Stühle/ 98 Wartesessel/ 108 Empfang/ 120 Möblierung/ 132 Farben/ 138 Zeichnungen

GAMMASTORE / Wash units / Bacs de lavage / Waschanlagen /



LAVAGGI

































GAMMASTORE / Styling units / Coiffeuses / Frisierplätze /

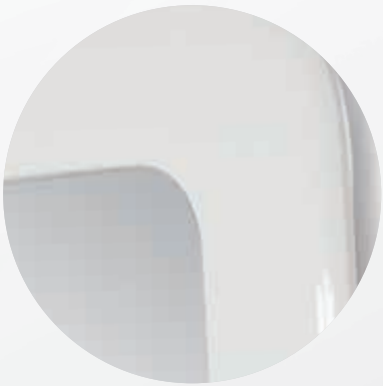
































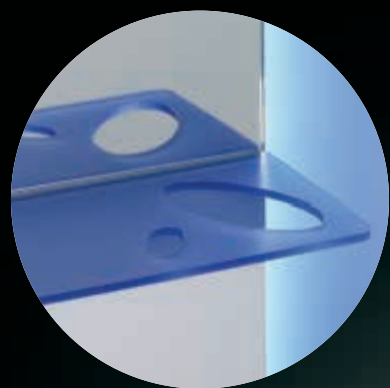






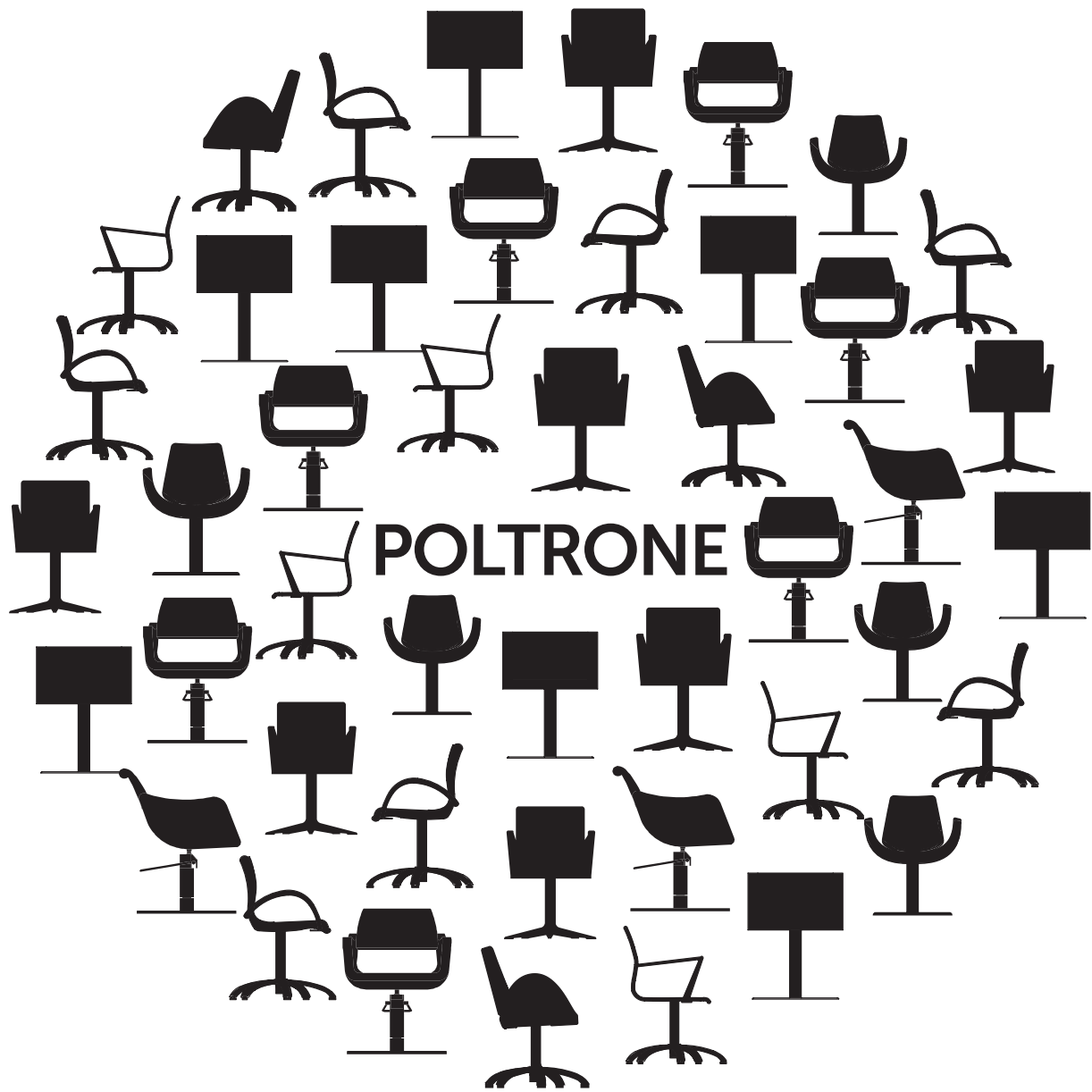








GAMMASTORE / Chairs / Fauteuils / Stühle /































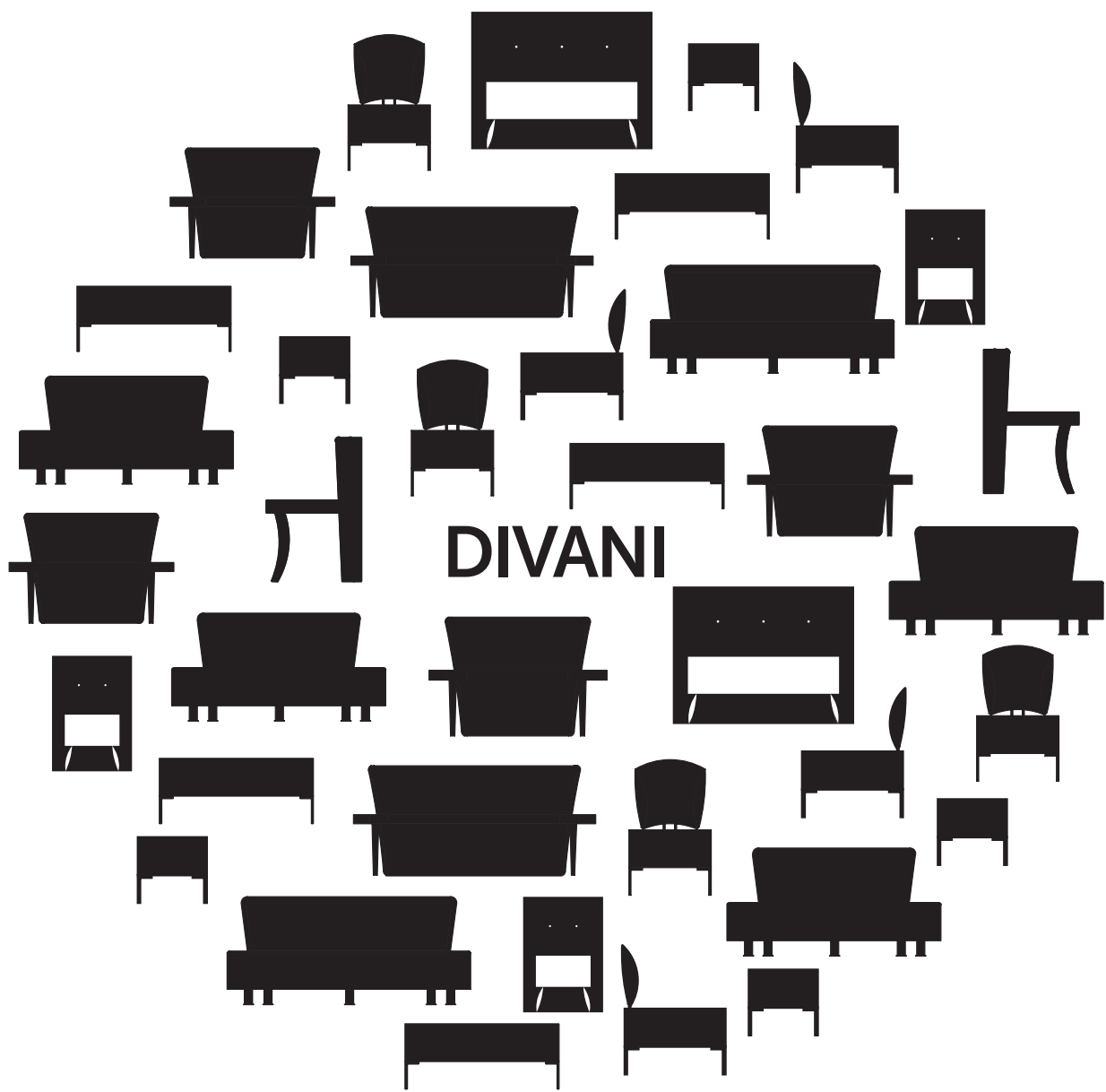








GAMMASTORE / Sofa / Chauffeuses / Wartesessel /















4 EVER 2/



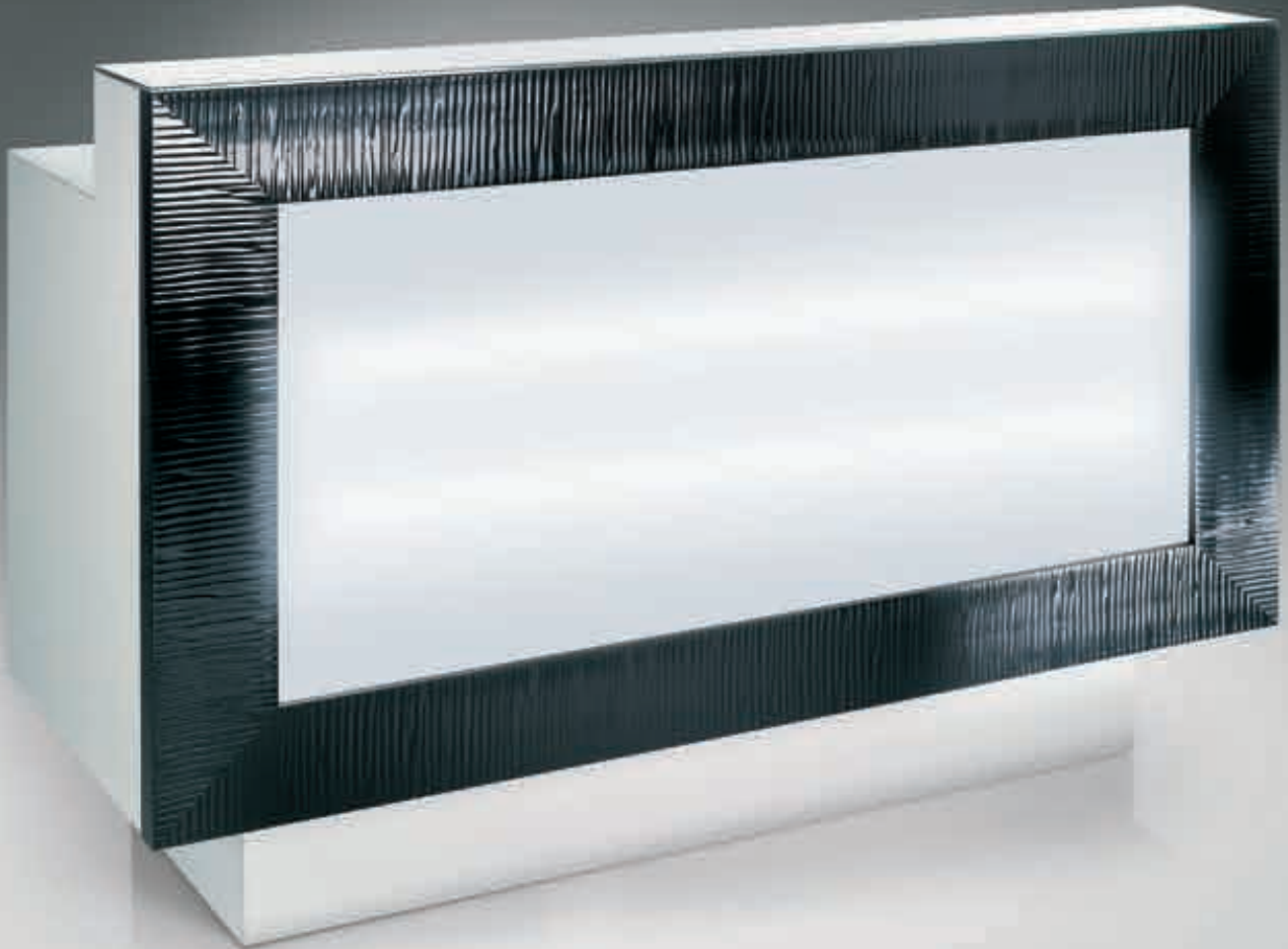




GAMMASTORE / Receptions / Accueil / Empfang /



RECEPTIONS



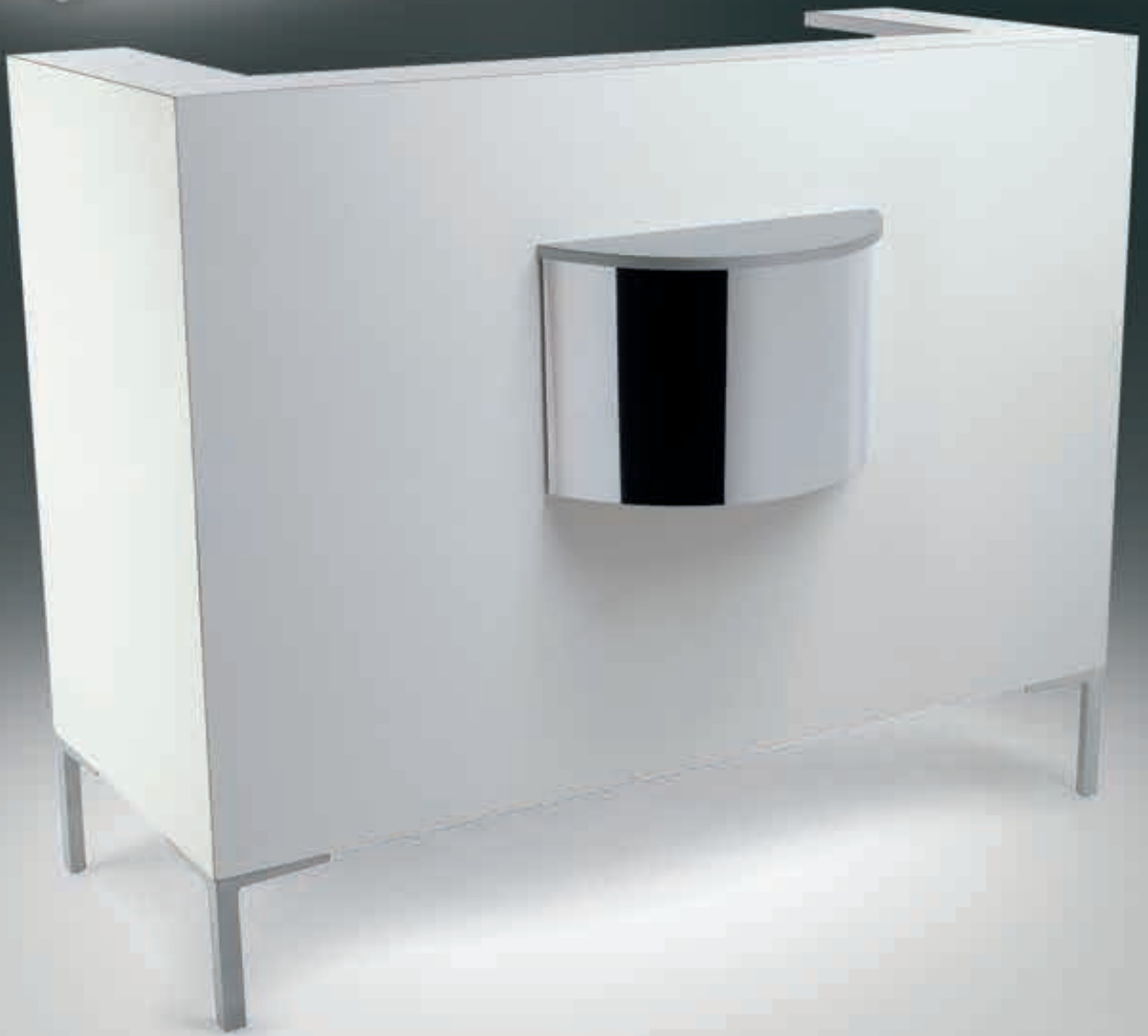










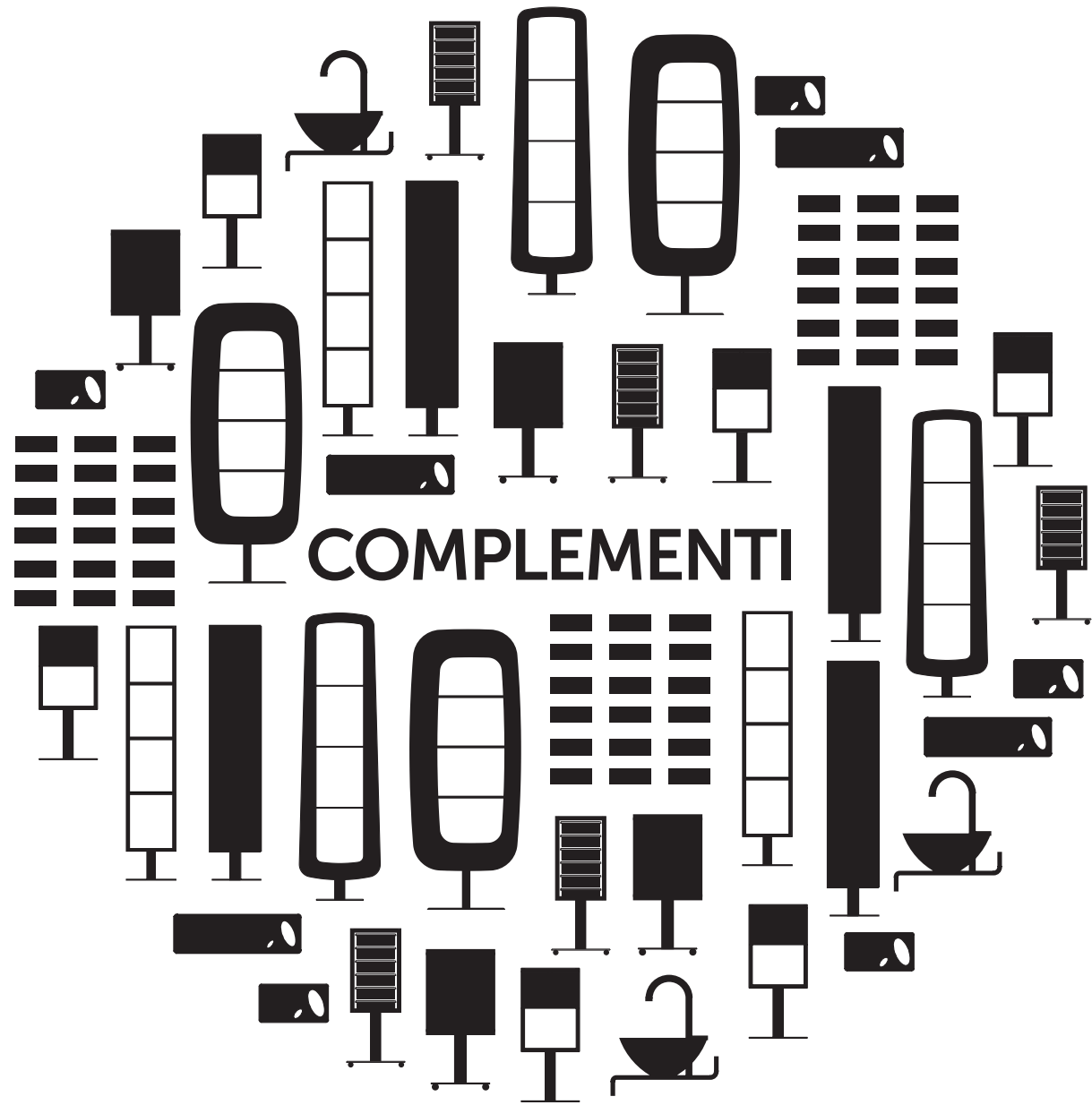








GAMMASTORE / Furnishing / Ameublement / Möblierung /















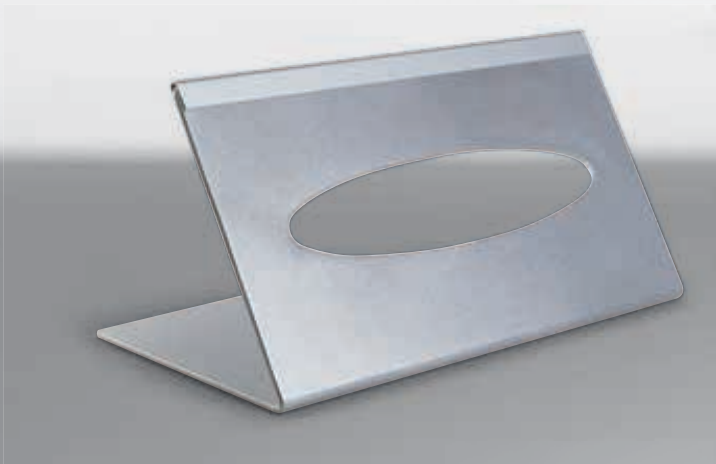






/ LUXSHELF

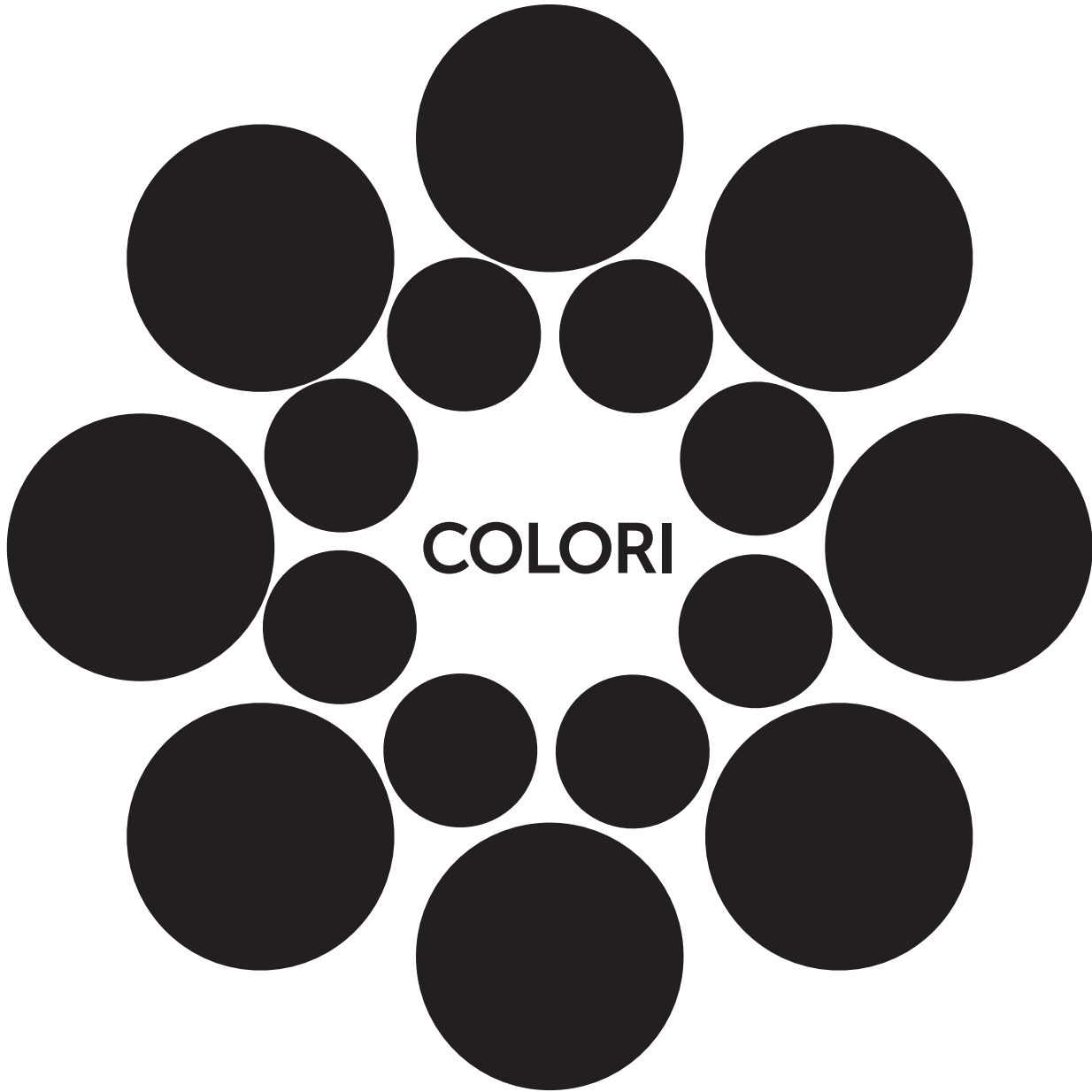




MOBIREST /



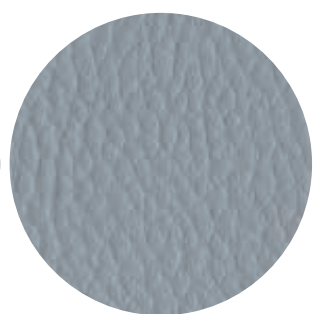
GAMMASTORE / Colors / Couleurs / Farben /



CAT Z



NERO 42



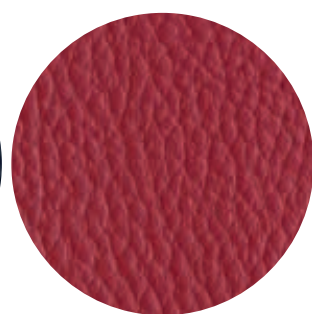
GRIGIO 31



VERDE 97



BLU 37

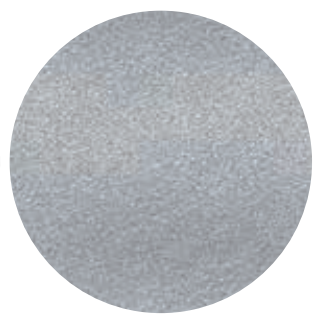


BORDEAUX 19

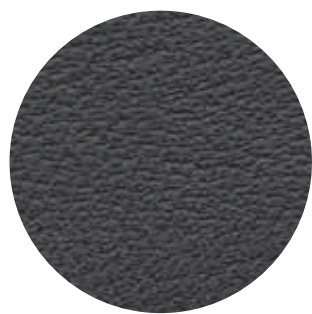
CAT A



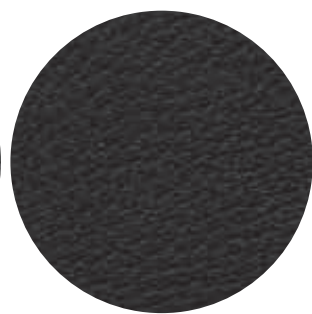
BLANC



METAL



GRIGIO N 161



NERO 001



GIALLO G 104



AVANA



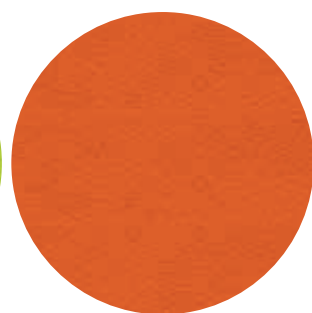
BISCOTTO



TERRA



LIME



ZUCCA

CAT B



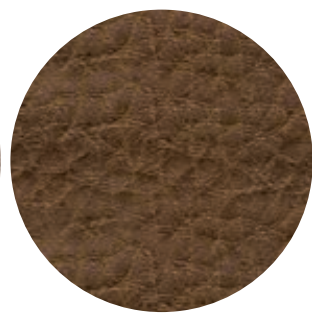
MOKA



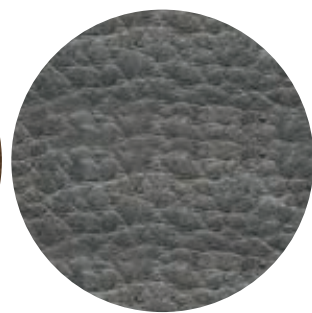
PEARL



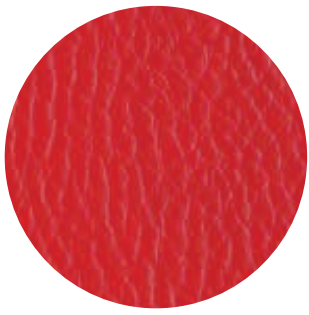
PLATINO



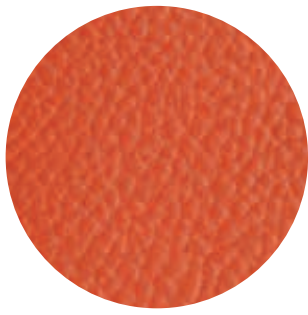
BARK



LEAD



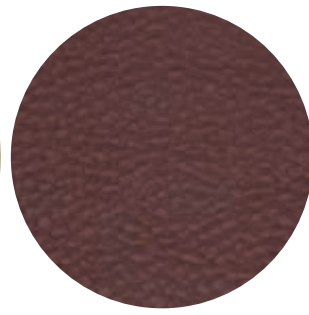
ROSSO 16



COTTO 14



SABBIA 02



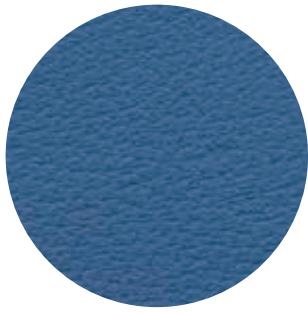
MARRONE 10



BIANCO 01



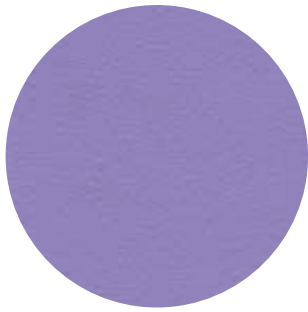
ROSSO R271



B233



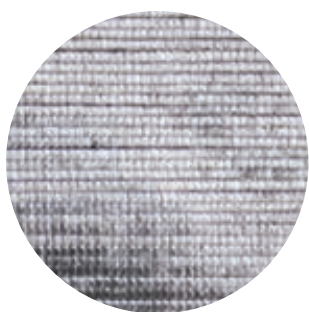
TOMATO



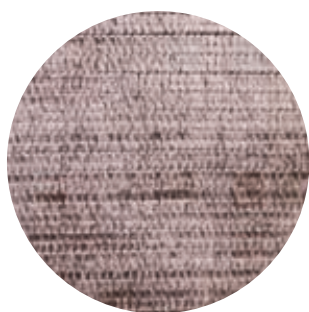
LILLA



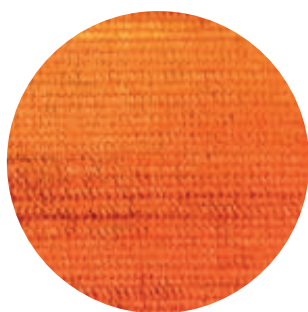
GRANATA



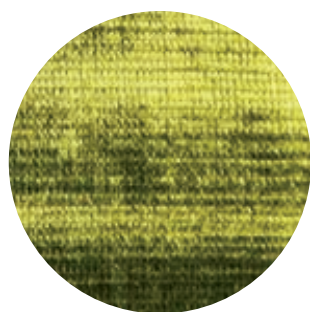
PELTRO



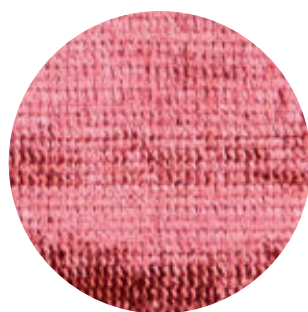
MACADAMIA



MANDARIN

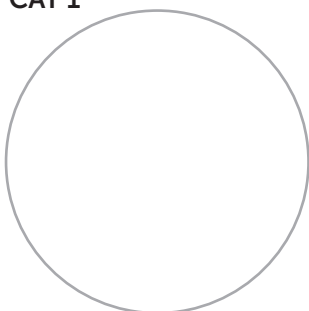


ACID GREEN



REEF

CAT 1



BIANCO 003



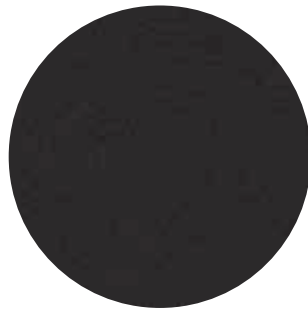
MAGNOLIA 810



U508



U 225 ROSSO



NERO U007

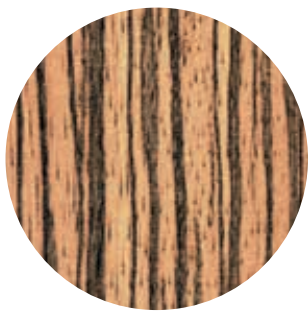
CAT 2



FAGGIO



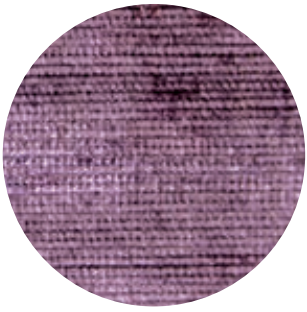
WENGÈ



F19001



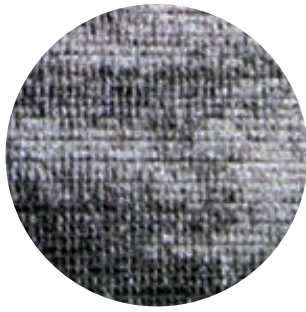
F19002



AMETISTA



RICHELIEU



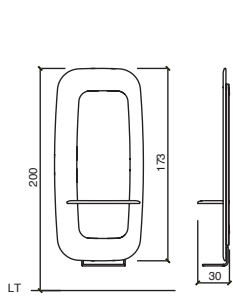
FOCA



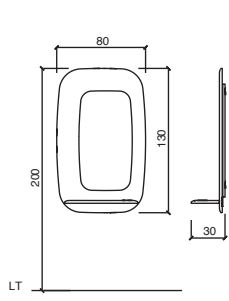
F06160

GAMMASTORE / Drawings / Dessins / Zeichnungen /

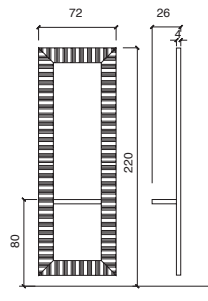
Posti lavoro / Styling units / Coiffeuses / Frisierplätze /



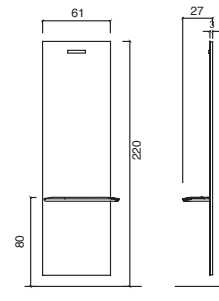
tonneau



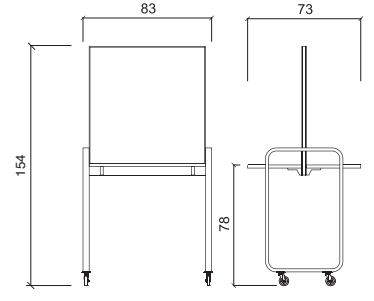
petit tonneau



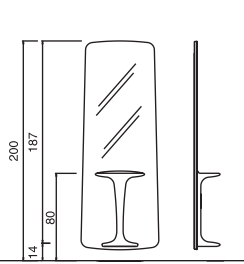
mirus



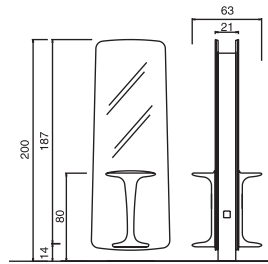
eco



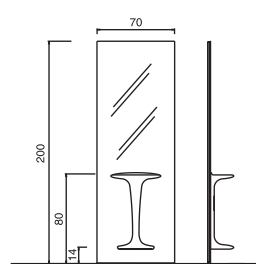
escuela



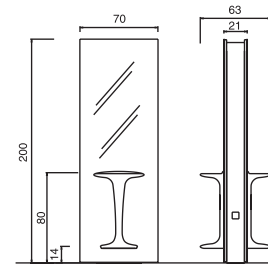
quick silver



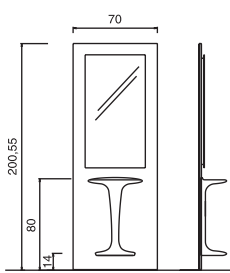
quick silver centrale



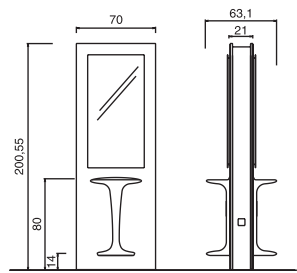
QS 1



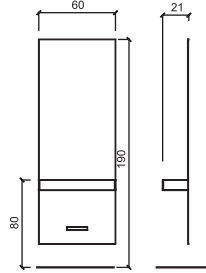
QS 1 centrale



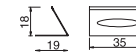
QS 2



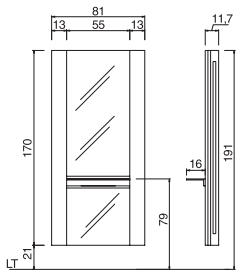
QS 2 centrale



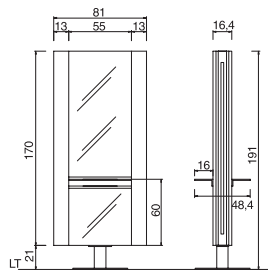
acrilige 60



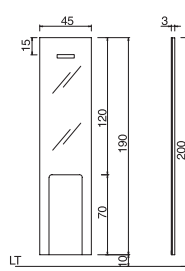
mobirest



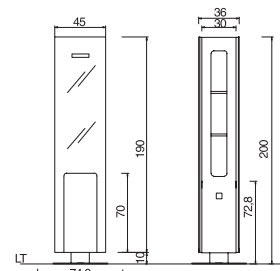
lucea



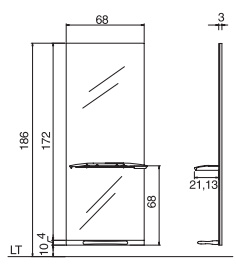
lucea centrale



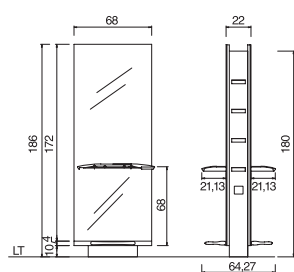
strip



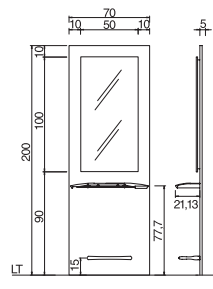
central strip



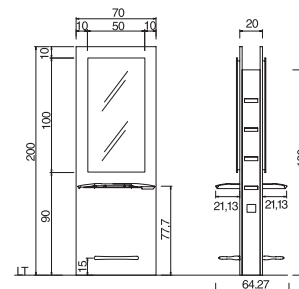
alifax



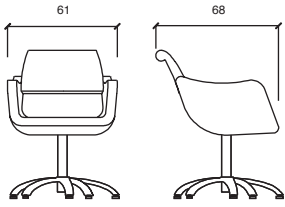
alifax centrale



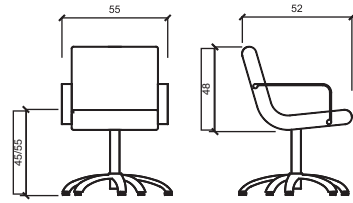
sanbo



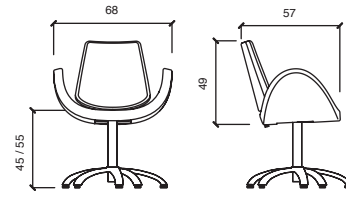
sanbo centrale



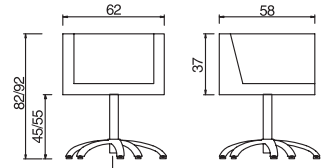
babuska
base 10



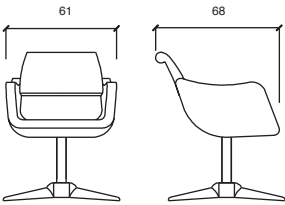
ziluna
base 10



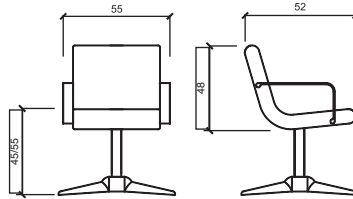
alipes
base 10



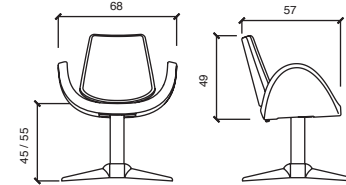
ø 6,5 kubika
base 10



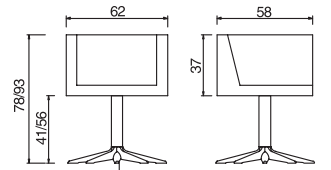
babuska
base parrot



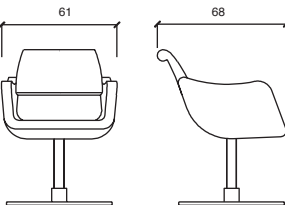
ziluna
base parrot



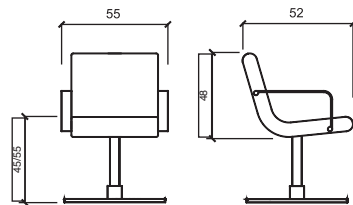
alipes
base parrot



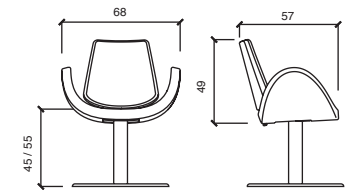
ø 7,5 kubika
base parrot



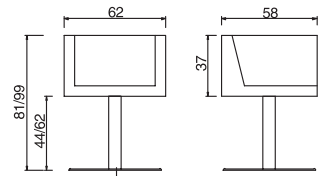
babuska
base rotonda



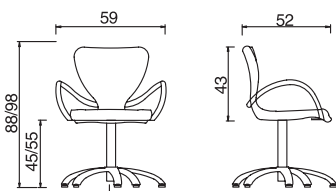
ziluna
base rotonda



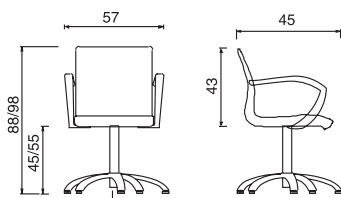
alipes
base rotonda



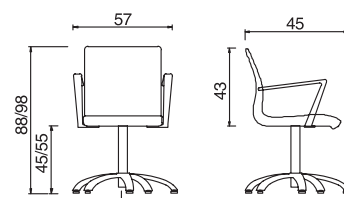
ø 7,5 kubika
base rotonda



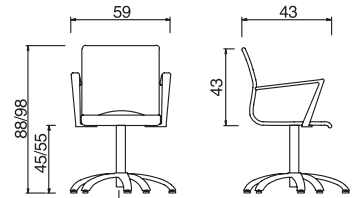
ø 6,5 folda
base 10



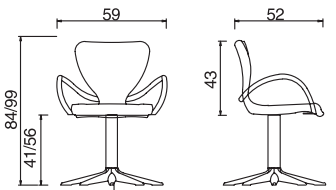
ø 6,5 otis
base 10



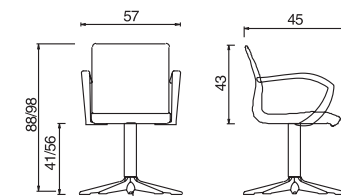
ø 6,5 aluotis
base 10



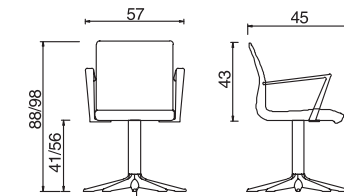
ø 6,5 rya
base 10



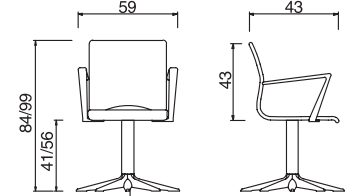
ø 7,5 folda
base parrot



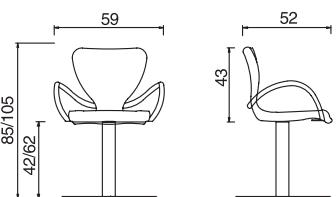
ø 7,5 otis
base parrot



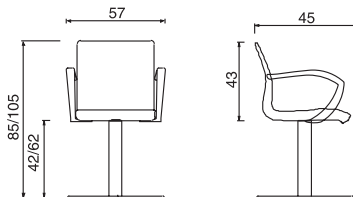
ø 7,5 aluotis
base parrot



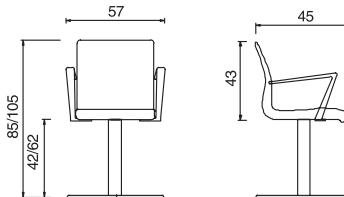
ø 7,5 rya
base parrot



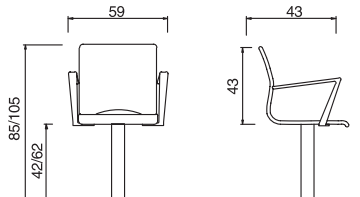
ø 7,5 folda
base rotonda



ø 7,5 otis
base rotonda

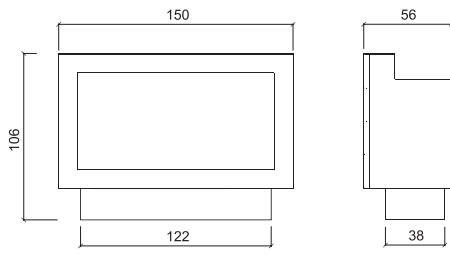


ø 7,5 aluotis
base rotonda

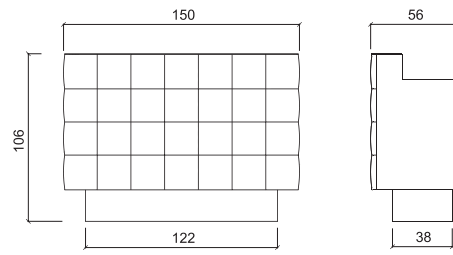


ø 7,5 rya
base rotonda

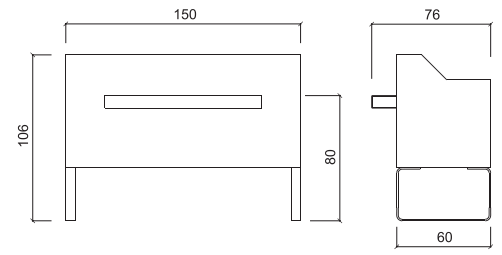
Receptions / Receptions / Accueil / Empfang /



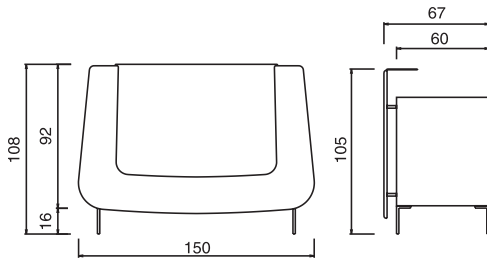
xp desk



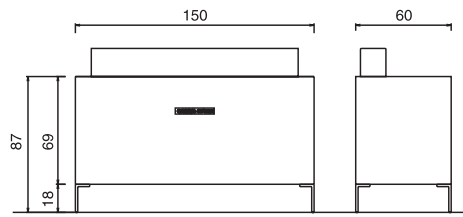
velvet



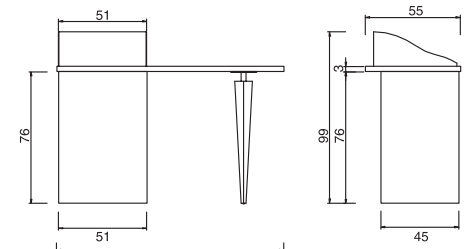
sledesk



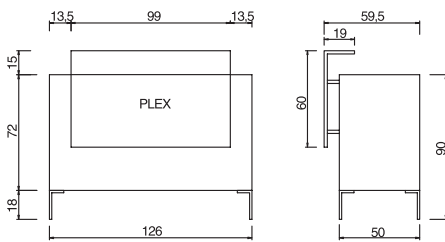
blogg



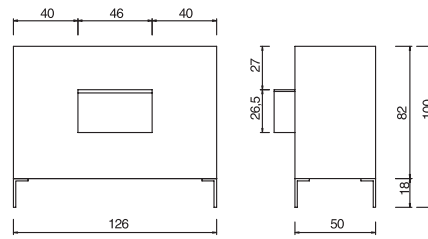
ecochic



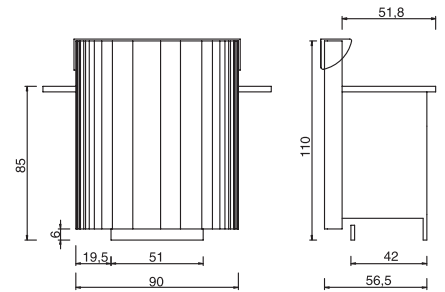
malena



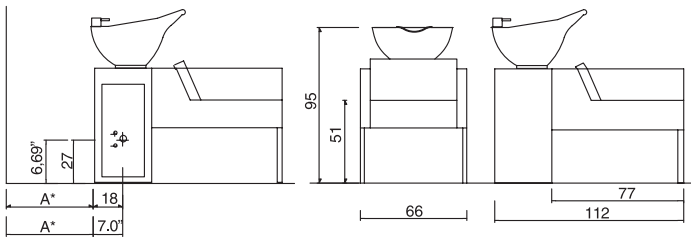
yuka



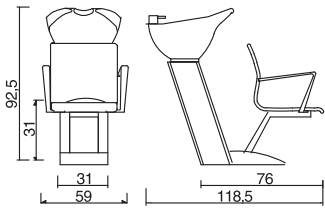
teka



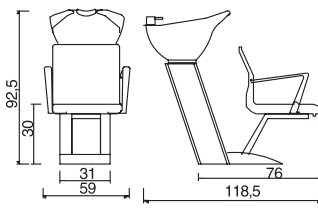
eka



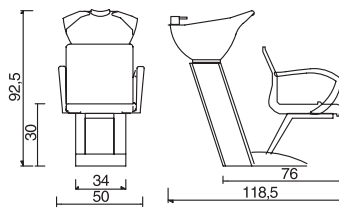
kubikwash



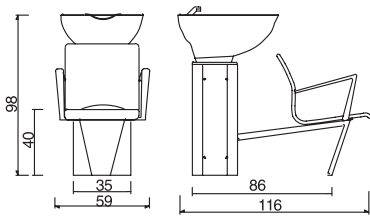
l type - rya



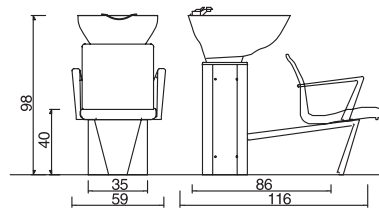
l type - aluotis



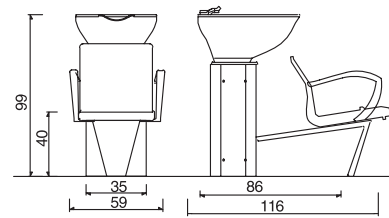
l type - otis



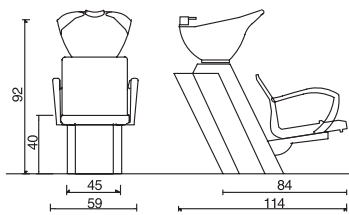
wash inn rya



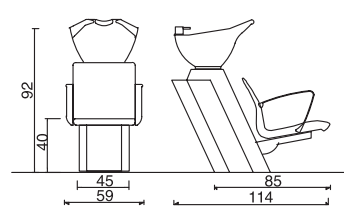
wash inn aluotis



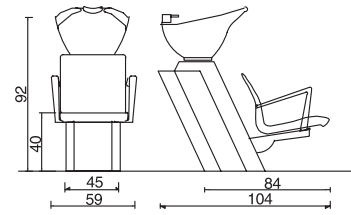
wash inn otis



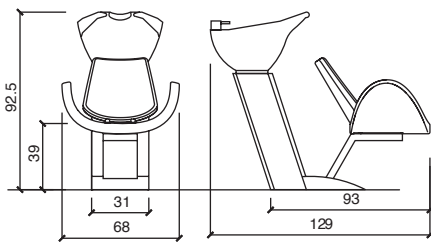
gray key otis



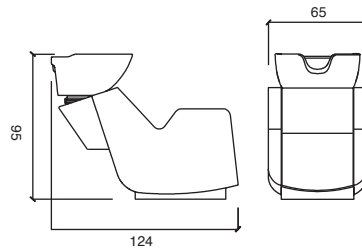
gray key otinox



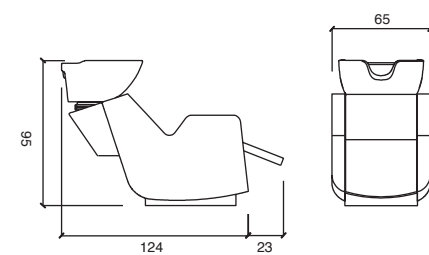
gray key otisalu wash



aliwash

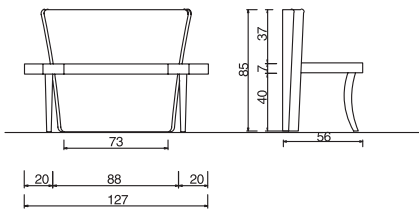


ultrawash

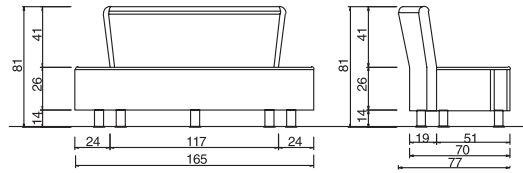
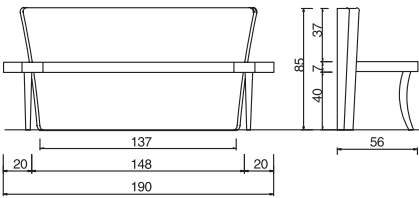


ultrawash shiatsu

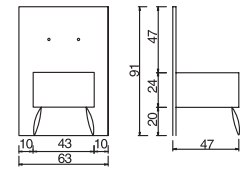
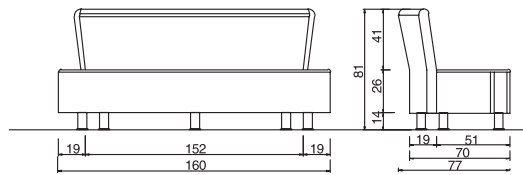
Divani / Sofa / Chauffeuses / Wartesessel /



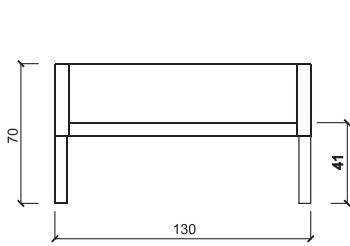
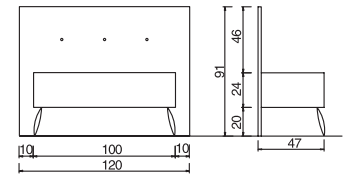
ouverture



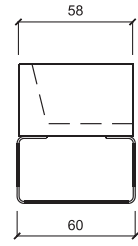
bean



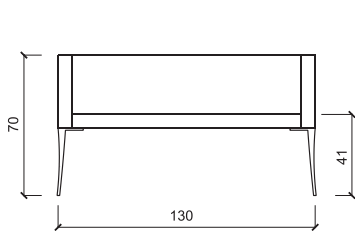
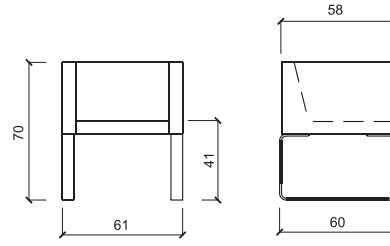
bubu



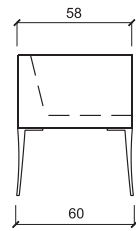
kubibench 2



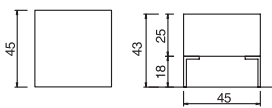
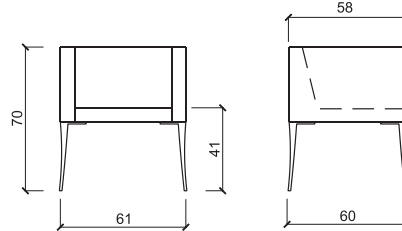
kubibench



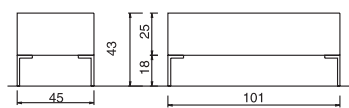
kubichair 2



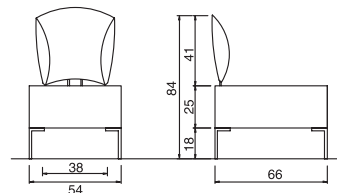
kubichair



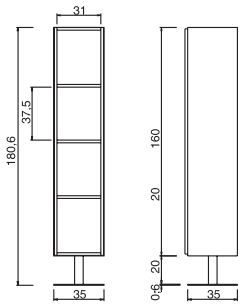
4 ever



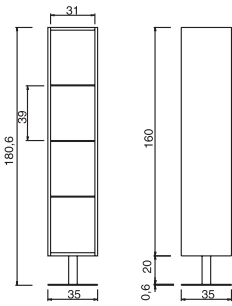
4 ever 2



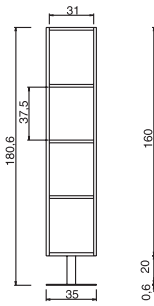
koto



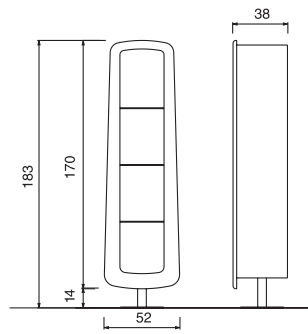
fura anta n



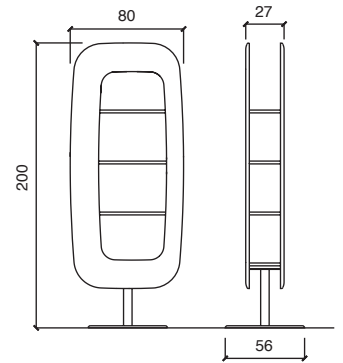
fura anta p



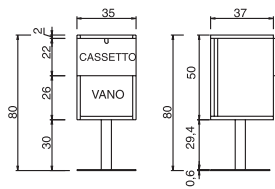
fura giorno



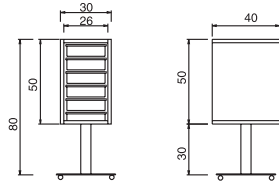
jelly



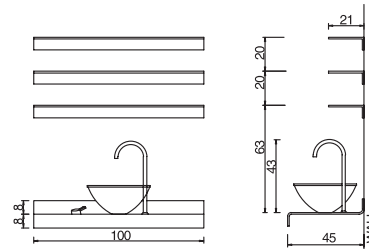
polyframe



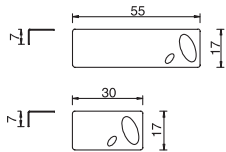
ezò



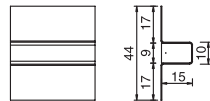
ezò trolley



washlab



multiplano



luxshelf

Le informazioni contenute in questo stampato non sono vincolanti. Gamma & Bross si riserva la facoltà di effettuare eventuali modifiche senza preavviso. I colori dei prodotti possono non riprodurre fedelmente quelli reali.

The photos of the products are indicative. Gamma & Bross reserves the right to introduce changes to the products without notice.



GAMMA & BROSS s.p.a.

via G. Mazzini 62 E - 46043 Castiglione d/Stiviere MN - Italy - ph. +39. 0376. 632630 - fax +39. 0376. 636683
info@gammabross.com - www.gammabross.com - www.gammastore.com

GAMMA & BROSS USA INC.

260 West 35th Street 14th fl. New York 10001 NY - U.S.A. ph. (212) 239-6916 - fax (212) 239-6917
nyc@gammabross.com

GAMMA & BROSS DEUTSCHLAND

Venloer Straße 419-421, 50825 Köln - tel. +49 221 299 702 54 - fax +49 210 298 6575
koeln@gammabross.com

SHOWROOM PARIS GAMMA & BROSS FRANCE

Activille 4, Rue de Cheraton 2, Quai Blanqui 94140 Alfortville
France - tel. +33.01.43536868 - fax +33.01.43530669
paris@gammabross.com